

## Element 455

15.1" and 18.5" POS Terminal



The **Element 455** redefines efficiency with its compact and modern design, making it perfect for retail and hospitality environments. Powered by an Intel® processor, it delivers seamless performance on a fanless system, ensuring reliability and quiet operation.

Designed for versatility, the 455 features a sleek 15.1" or 18.5" touchscreen display, multiple connectivity options, and flexible peripheral support, allowing businesses to customise their setup with scanners, printers, and customer-facing displays.

With a durable yet stylish build, this all-in-one POS terminal is an excellent solution for businesses seeking a space-saving, high-performance system that enhances both customer interactions and operational workflows.

- > Equipped with Intel® Alder Lake N N95 / i3-N305 processors
- > Supports Windows 11 IoT Enterprise, Linux, Android 13.0
- > Features a 15.1" or 18.5" 1024 x 768 display with PCAP touch technology
- > High Flexibility with Foldable Stand
- > Intelligent cable management integrated into the stand
- > VESA mounting compatibility for both the back cover and foldable stand
- > Front splash-proof protection & a versatile selection of peripherals

## DISPLAY



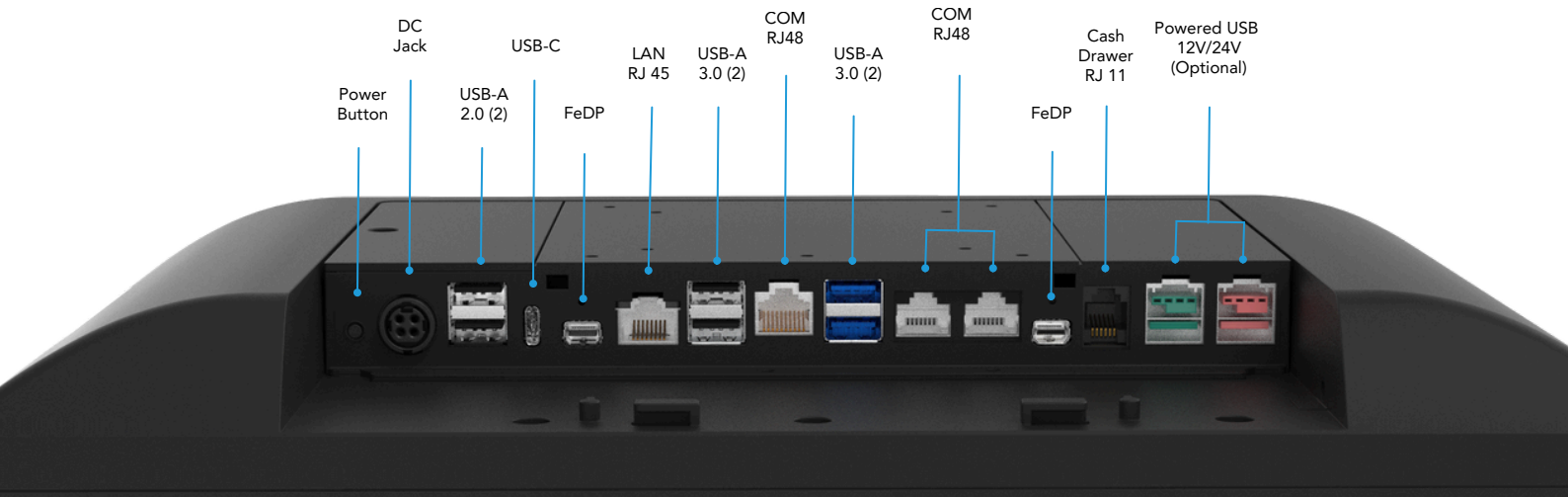
Crafted with **PCAP** touch technology for intuitive navigation and increased durability.

## MODULARITY



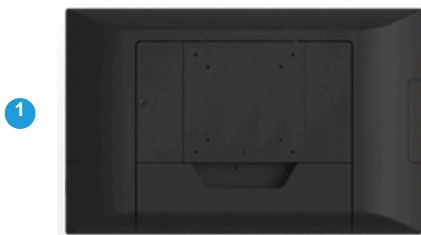
The new 455 CPU Module features a modular design that enables **tool-free removal** for streamlined servicing and component access.

## I/O PORTS

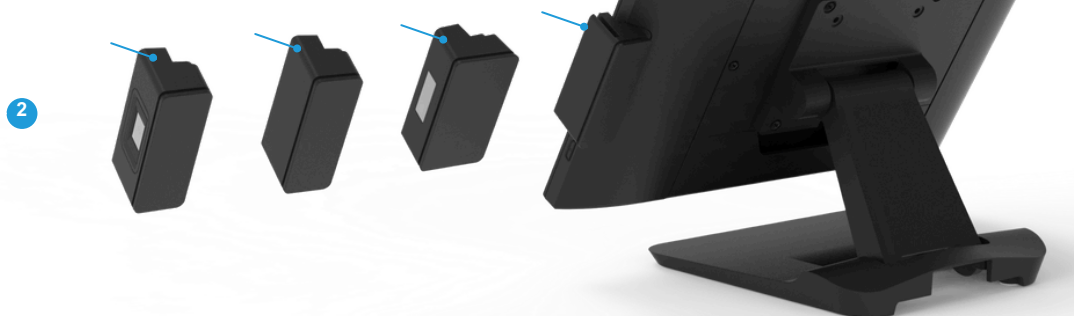


## WIDE SELECTION OF PERIPHERALS

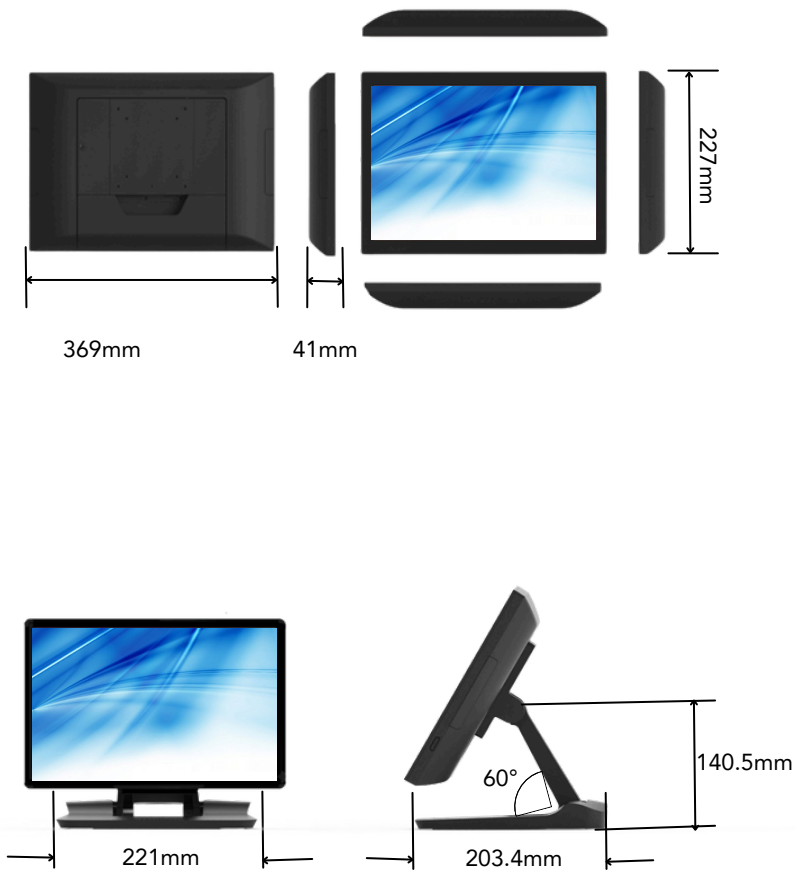
Compatible on 2 Sides  
Optional Peripherals



Fingerprint    NFC    Scanner    MSR



## PRODUCT DIMENSION



## SINGLE CABLE SOLUTION

Dedicated 11.6 CDU display screen – connect via a single cable and bracket.



Connect an Element customer display touch monitor (11.6" or 15.6") via FEDP or USB-C for a clean, single-cable solution."

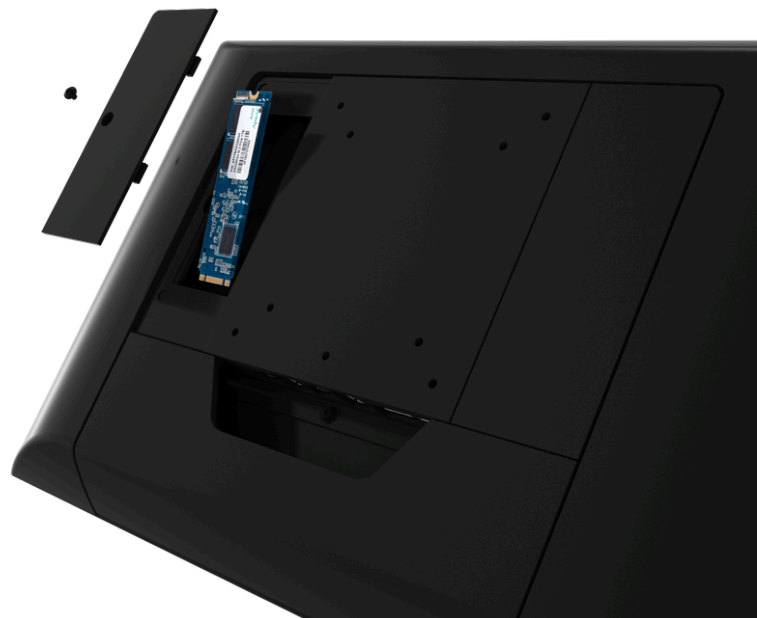
## VESA COMPATIBLE

Compatible with 75/100 VESA mount.



## EASY SERVICE

Rear service door for storage expansion card.



# Technical Specifications - 455 POS System

Item		Parameter
System	Motherboard	G35
	Processor	Intel® Alder Lake N Processor: N95, i3-N305
	Memory	1x DDR4 8GB
	Storage	128GB SSD (M.2)
Display	Size and Resolution	15.1" 1024 x 768
	Touch Screen	True-Flat PCAP multi-touch
I/O ports	USB Type-A	2 x USB3.0, 4 x USB2.0
	USB Type-C	1 x USB3.0 full-functioned (DP/PD 5V/3A, 12V/3A)
	Serial Port	3 x RJ48 (standard RS232) (default 0V; 5V,12V)
	LAN	1 x RJ45
	Cash Drawer	1 x RJ11
	FeDP	2 x proprietary miniDP (1 x for main display, 1 x for 2nd display)
	DC Jack	1 x 4PIN (with latch)
Optional I/O	Powered USB (Optional)	1x Powered USB 12V, 1x Powered USB 24V
Audio	Internal Speaker	1 x 3W
Indicator	Power Button	1
Power	Power Adapter	65W/19V (120W/19V with 1x PUSB 12V & 1x PUSB 24V)
Communication	WLAN + BT (Optional)	802.11 series + BT5.0 (Optional)
Peripheral (optional)	MSR	3-Track MSR (USB)
	Fingerprint	Fingerprint Reader (USB)
	iButton	iButton (USB)
	Customer Display	LCM display 2 x 20 characters (USB)
	2nd Display	11.6" 2nd Display
Certificate	EMC & Safety	FCC Class A, CE Mark Class A, LVD
Environment	Operating Temperature	0°C ~ 35°C (32°F ~ 95°F)
	Storage Temperature	-20°C ~ 60°C (-4°F ~ 140°F)
	Humidity	20% ~ 85% RH non-condensing
Dimensions	W x H x D	369 x 277 x 203 mm (14.2" x 10.9" x 8.0")
Weight		4.3 kg
Mounting	VESA Mount	75 x 75, 100 x 100
OS Supported		Windows 11 IoT Enterprise, Linux, Android 13.0

\*Product specifications and data are subject to change without notice (E&OE)