

# CITIZEN

Micro HumanTech

## Great performance - Small price Naturally Citizen



### Environmentally friendly

From production and packaging to utilisation and recycling the CT-S310II fulfils today's demand for green IT products. The integrated Energy Star® power supply is one of the most efficient at managing power consumption.

### Dual Interface

With an USB and serial interface on board the CT-S310II is a future-proof investment.



### Tool-free maintenance

Paper jam? No problem. The printer comes with the same intelligent service features as Citizen's high end printers.

### Long Life Print

The new LLP function can extend the print head life to 200km or more

## CITIZEN CT-S310II

POS

### Applications

- Receipt
- Coupon
- Ticket
- Daily report
- Kitchen
- Delivery slip
- Barcode
- Weigh scales
- Kiosk



Easy Maintenance for Cutter, Print Head and Platen



# CITIZEN

Micro HumanTech

## Specifications

<b>Printing method</b>	Line thermal dot printing
<b>Printing width</b>	80mm paper: 72mm/576 dots 58mm paper: 48mm/384 dots
<b>Dot pitch</b>	8 x 8 dots/mm (203 dpi x 203 dpi)
<b>Printing speed</b>	Max. 160mm/sec.
<b>Number of columns</b>	80mm paper: Font A-48 columns, Font B-64 columns, Font C-72 columns 58mm paper: Font A: 35/32columns, Font B 46/42 columns, Font C: 52/48 columns
<b>Character size</b>	Font A: 1.50 x 3.00mm (12 x 24 dots) Font B: 1.13 x 3.00mm (9 x 24 dots) Font C: 1.00 x 2.00mm (8 x 16 dots)
<b>Character table</b>	Code page 437, 850, 852,8 57, 858, 860, 863, 864, 865, 866, Katakana, WPC1252 , Thai code 18
<b>Barcode type</b>	UPC-A/E, JAN-13/8, ITF, Code 39, Code 128, CODABAR,Code 93, GS1 Databar, PDF417, QR Code
<b>Line spacing</b>	4.25mm (1/6 inch); adjustable by user by comand
<b>Paper</b>	Thermal paper roll, 80 or 58mm (W)x Ø83mm
<b>Interface</b>	USB Full Speed & Serial (RS-232C) build in
<b>Input buffer</b>	4K bytes / 45 bytes
<b>NV user memory</b>	User area for character 192Kbyte, User area for graphic 384KByte
<b>Drawer kick-out</b>	2 Drawers
<b>Power</b>	Input: AC100 - AC240 V, 47/63Hz, Engery Star approved
<b>Power consumption</b>	Printing 40 W, Sleep 0,7 W, Standby 0,15 W
<b>Weight</b>	1,9 kg
<b>Dimension (W x D x H)</b>	140 x 195 x 132 mm
<b>Operating environment</b>	5-45°C, 10-90% RH
<b>Storage environment</b>	-20-60°C, 10-90% RH
<b>Reliability</b>	Thermal head: 300.000.000 pulses or 150km (200km or more with LLP (Long Life Print) Function) Auto cutter: 2.000.000 cuts
<b>EHC and saftety standard</b>	UL, C-UL, FCC Class A, TUV-GS, CE marking, VCCI

## Type Classification

CT-S310II E BK

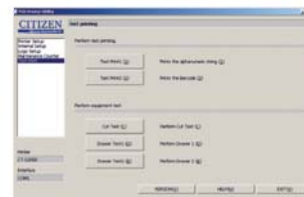
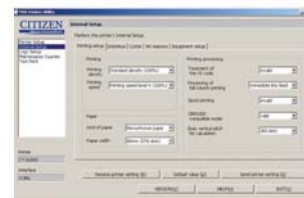
1) 2) 3)

1) **Model type**  
CT-S310II

2) **Character set**  
U: USA  
E: Europe

3) **Body case color**  
WH: Cool white  
BK: Black

## POS-Printer Utility



## Features



- 160mm/sec. high-speed printing
- 80/58mm selectable paper width
- Compact design
- Easy paper loading
- Fast and quiet Cutter (full/partial)
- Easy Maintenance for Cutter, Print Head and Platen
- LLP (Long Life Print) function for extending the print head life
- USB and serial interface as built-in interface
- Built-in Engery Star® power supply
- Low power consumption: Power Save Mode / USB Power Save Mode
- Paper save function: Top Margin / Line spacing / Font Compression
- Cash drawer kick-out
- Bitmap data registration (NV memory)
- Barcode printing including GS1 DataBar and 2D barcode
- ESC/POS compatibility
- Page mode
- Easy customization by Utility Software
- Available in white or black
- All-in-one package
- Driver: Windows2000/XP/Vista/7 32 bit/64 bit/OPOS/JavaPOS/POS for .NET/CUPS

Australian Distributor:

Goodson Imports Pty Ltd

142 Wicks Road, North Ryde NSW 2113

Ph 02-8875 4544 Fax 02-8875 4588

Branches in all major States of Australia

[www.goodson.com.au](http://www.goodson.com.au)

New Zealand:

Goodson Imports NZ P/L in Auckland

Brochure design by CITIZEN SYSTEMS EUROPE GmbH  
E.& O.E. Specifications subject to change without notice.