

# SAM4S



The New ELLIX

# ELLIX30/40 series

## Faster and Easier

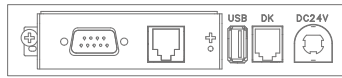
- Faster Printing Speeds
- Conveniently Provides NFC Tag
- Paper Jam-Free Auto Cutter
- Comprehensive Barcode Formats
- Low Power Consumption and Paper Saving
- Supports Various Options and Interfaces



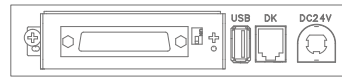
## INTERFACE VIEW



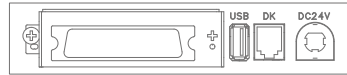
▲ USB Only



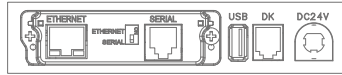
▲ USB + RS-232(9Pin + RJ45)



▲ USB + RS-232(25Pin)



▲ USB + Parallel



▲ USB + RS-232(RJ45) + Ethernet (3-Combo)



▲ USB + Wi-Fi(WLAN)



◀ USB + BLUETOOTH

## KEY FEATURE



Easy paper loading & Jam Free/Apply auto cutter



Removable brands panel



Aluminum main frame structure with low noise & robustness

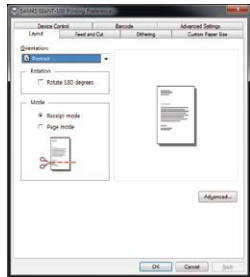


Easy assembly and disassembly with hand screw

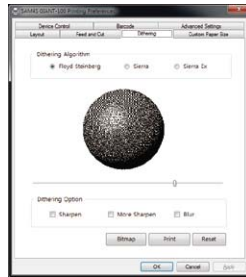


Automatic display pivot function at the wall-mount

## New ELLIX Printer Windows Driver



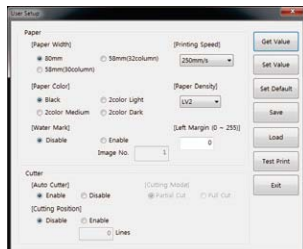
▲ Layout  
Setting of orientation, Rotation, Cutting mode



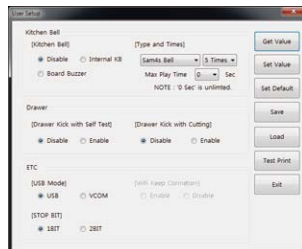
▲ Dithering  
3 Dithering algorithm, 4 Dithering options



▲ Barcode  
Detailed setting functions for barcode (1D, 2D) printing



▲ Print  
Paper size, Printing speed, Watermark, Margin, Cutting



▲ Peripherals  
Kitchen bell, Cash drawer, Etc.



▲ Logo  
Preview and print support

## SPECIFICATION

Model	ELLIX40 Series	ELLIX30 Series	
Submodel	ELLIX40II/42	ELLIX30III/32	
Printing Method	Thermal Line Printing		
Resolution	ELLIX40II: 180dpi / ELLIX42: 203dpi	ELLIX30III: 180dpi / ELLIX32: 203dpi	
Printing Speed	Mono Paper 80mm	ELLIX40II: Max. 270mm/sec(63lines/sec) ELLIX42: Max. 220mm/sec(58lines/sec)	
	Mono Paper 58mm	150 mm/sec	
	Two Color Paper	100 mm/sec	
Paper	Loading	Drop-In Type	
	Width	Max. 80.0 mm / 58.0 mm	
	Diameter	Max. Ø83.0 mm	
Memory	PGM Memory	10MByte	
	DATA Memory	8MByte	
	DATA Buffer	64KByte	
Reliability	Mechanism(MCBF)	70,000,000 Lines	
	TPH	1 x 10 <sup>8</sup> Pulses / 150 Km	
	Auto Cutter	2,000,000 Cuts	
Drawer Port	2 Ports (+24V)		
Barcode	UPC-A, UPC-E, EAN8, EAN13, Code 39, Code 93, Code 128, ITF, CODABAR, PDF417, QRCode		
Driver / Utility	Windows Driver, OPOS Driver, JPOS Driver(Linux&Mac), Cups Driver(Linux&Mac), Utility Program		
SDK	iOS SDK, Android SDK		
Interface	USB Only, USB + Serial(25Pin), USB + Serial(9Pin + RJ45), USB + Parallel, USB + Bluetooth, USB + Wi-Fi, USB + Serial + Ethernet (3-Combo)	USB + Serial(25Pin), USB + Serial(9Pin + RJ45), USB + Parallel, USB + Wi-Fi, USB + Serial + Ethernet (3-Combo)	
Dimension(with Foot Rubber)	144(W) x 195(D) x 137(H) mm		
Weight	2.0 Kg		
Color	Black, White		
Emulation	EPSON, STAR		
Power Supply	DC 24V/2.5A		
Option	LCD Display	Yes	No
	Paper Near End Sensor	Default	Yes
	Kitchen Bell	Yes	Yes
	Wall Mount Kit	Yes	Yes
	Splash Cover	Yes	Yes
	Paper Partition(58mm)	Yes	Yes
NFC Tag	No	Yes	

\* Without any prior notice, design and specification are subject to change.

Australian Distributor: Goodson Imports Pty Ltd, Representation in all main States and New Zealand,  
Ph: 02-8875 4544 Fax 02-8875 4588, www.goodson.com.au



Shinheung Precisions

9F, Flat-C, Woolim Lion's Valley, Gasan Digital 1Ro 168, Geumcheon-gu, Seoul, 08507, Korea  
Tel. +82-2-2101-9623 | Fax. +82-2-2101-9690 | www.sam4s.com

